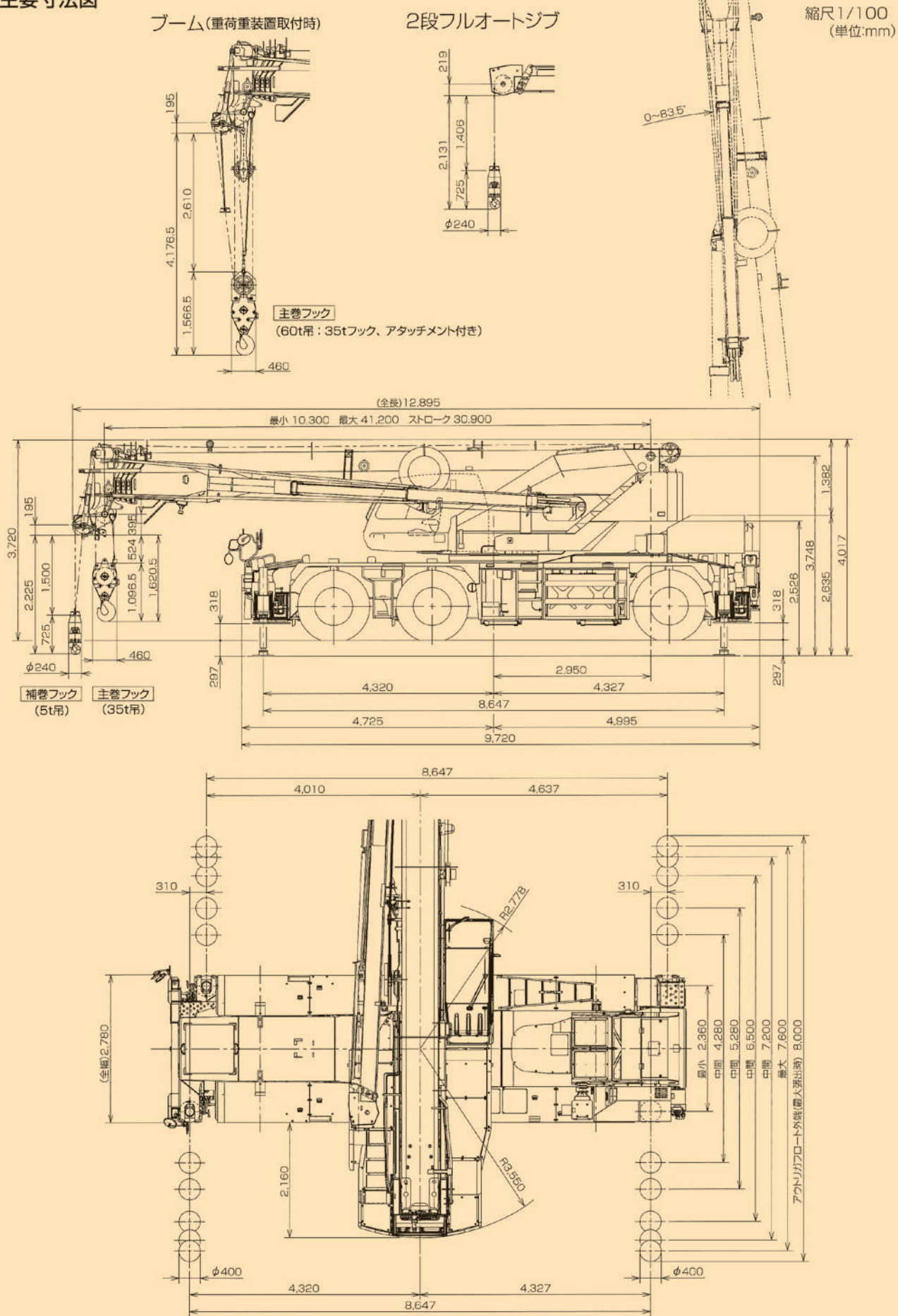


# GR-600N (TADANO)



## ■主要寸法図

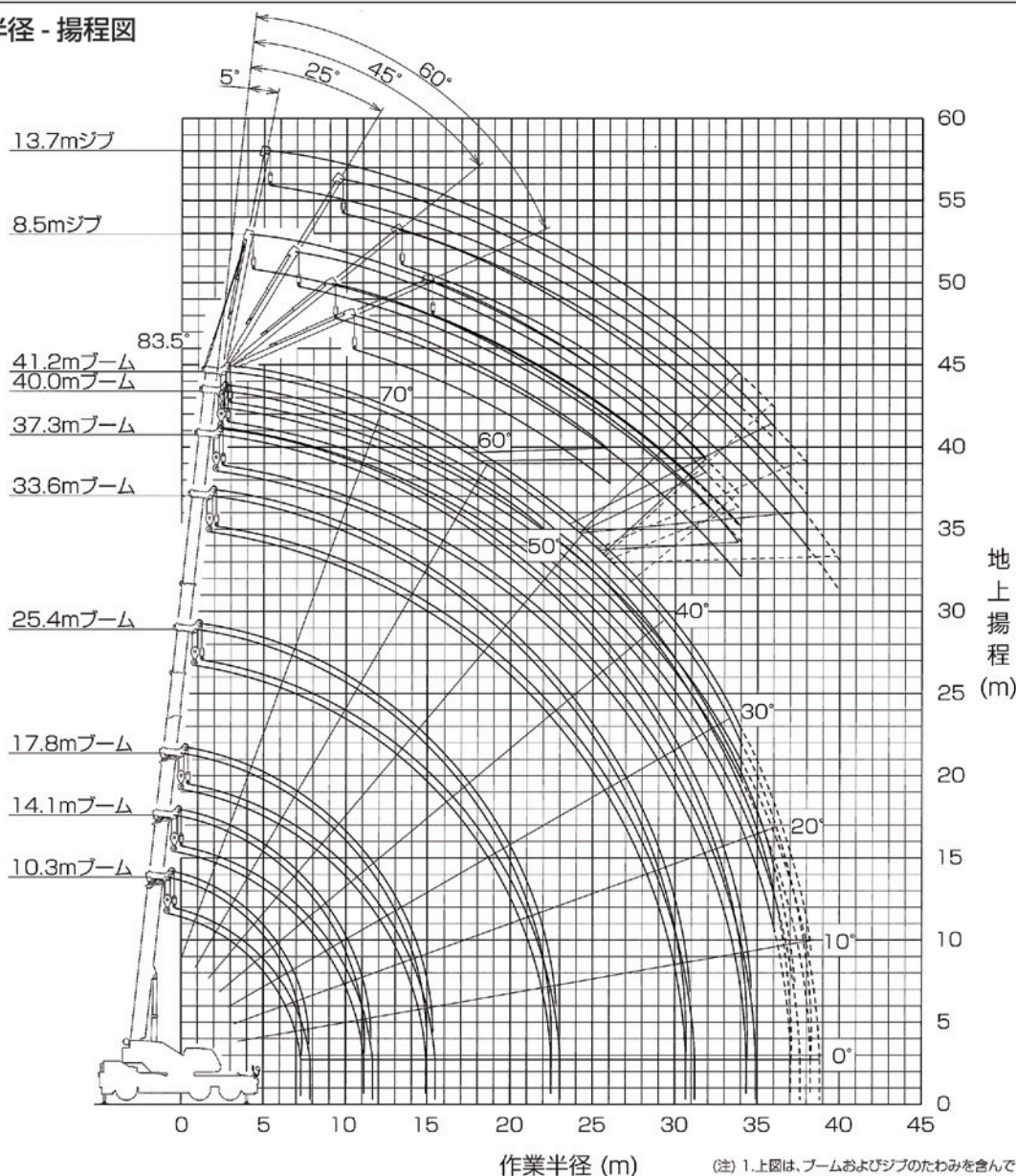


本図に記載のAML外部表示灯、ドラム監視カメラ、作業時リヤカメラ、LEDマーカールンプ、路肩灯、リモコンサーチライトはオプションです。



# GR-600N <TADANO>

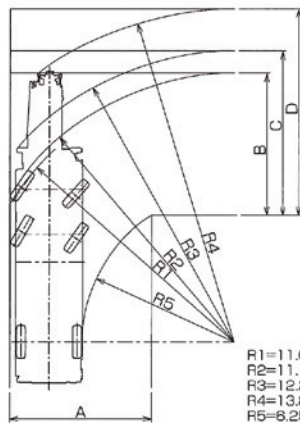
## ■作業半径 - 揚程図



(注) 1.上図は、ブームおよびジブのたわみを含んでいません。  
2.上図は、アウトリガ最大(7.6m)吐出状態での図です。  
3.上図中、破線の部分は、スマートチャート性能の場合を示します。

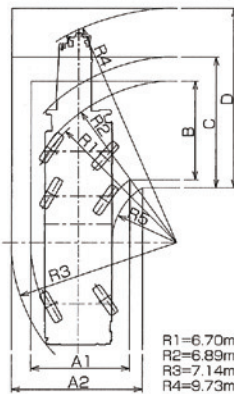
## ■最小直角通路幅

●前4輪ステアリングで右折する場合



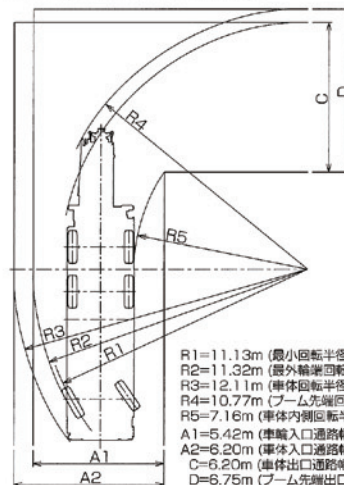
R1=11.00m (最小回転半径)  
R2=11.19m (最外輪架回転半径)  
R3=12.28m (車体回転半径)  
R4=13.85m (ブーム先端回転半径)  
R5=8.25m (車体内側回転半径)  
A=5.85m (入口通路幅)  
B=5.85m (車体出口通路幅)  
C=6.77m (車体出口通路幅)  
D=8.50m (ブーム先端出口通路幅)

●6輪ステアリングで右折する場合



R1=6.70m (最小回転半径)  
R2=6.89m (最外輪架回転半径)  
R3=7.14m (車体回転半径)  
R4=9.73m (ブーム先端回転半径)  
R5=2.67m (車体内側回転半径)  
A1=4.08m (車体入口通路幅)  
A2=5.41m (車体出口通路幅)  
B=4.08m (車体出口通路幅)  
C=5.41m (車体出口通路幅)  
D=7.43m (ブーム先端出口通路幅)

●後2輪ステアリングで右折する場合



R1=11.13m (最小回転半径)  
R2=11.32m (最外輪架回転半径)  
R3=12.11m (車体回転半径)  
R4=10.77m (ブーム先端回転半径)  
R5=7.16m (車体内側回転半径)  
A1=5.42m (車体入口通路幅)  
A2=6.20m (車体入口通路幅)  
C=6.20m (車体出口通路幅)  
D=6.75m (ブーム先端出口通路幅)

(注) 上記数値は計算値です。





# GR-600N (TADANO)

## ■ブーム定格総荷重表

フック (主・補) (0.31 t・0.1 t)

MB		7.6m	360°	JPN

Boom Length (m)	10.3	14.1	14.1	17.8	17.8	25.4	25.4	33.6	33.6	37.3	37.3	40.0	40.0	41.2	m			
1.8	※60.00	35.00	20.30	35.00	20.30	20.30	16.80								1.8			
2.1	※57.00	35.00	20.30	35.00	20.30	20.30	16.80								2.1			
2.5	※55.00	35.00	20.30	35.00	20.30	20.30	16.80	14.00	12.00						2.5			
3.0	50.00	35.00	20.30	35.00	20.30	20.30	16.80	14.00	12.00	11.00	10.00				3.0			
3.5	42.00	35.00	20.30	35.00	20.30	20.30	16.80	14.00	12.00	11.00	10.00	7.60	7.60	7.20	3.5			
4.0	39.20	35.00	20.30	34.50	20.30	20.30	16.80	14.00	12.00	11.00	10.00	7.60	7.60	7.20	4.0			
4.5	36.60	34.70	20.30	32.50	20.30	20.30	16.80	14.00	12.00	11.00	10.00	7.60	7.60	7.20	4.5			
5.0	34.10	32.60	20.30	30.70	20.30	20.30	16.80	14.00	11.40	11.00	10.00	7.60	7.60	7.20	5.0			
5.5	30.70	30.40	20.30	29.00	20.30	20.30	16.80	14.00	10.80	11.00	10.00	7.60	7.60	7.20	5.5			
6.0	27.70	27.50	20.30	27.20	20.30	19.90	16.60	14.00	10.30	11.00	10.00	7.60	7.60	7.20	6.0			
6.5	25.20	24.90	20.30	24.70	20.30	19.00	15.80	14.00	9.80	11.00	10.00	7.60	7.60	7.20	6.5			
7.0	23.10	22.80	20.30	22.60	20.30	18.20	15.00	13.80	9.40	11.00	9.80	7.60	7.60	7.20	7.0			
8.0		19.20	20.30	19.00	20.30	16.80	13.70	12.90	8.60	11.00	9.00	7.60	7.60	7.20	8.0			
9.0		15.70	17.10	15.40	17.50	15.40	12.50	12.00	7.90	10.80	8.30	7.60	7.60	7.20	9.0			
10.0		12.50	14.00	12.20	14.50	13.50	11.50	11.20	7.30	10.10	7.70	7.60	7.60	7.20	10.0			
11.0		10.20	11.60	9.90	12.10	11.10	10.70	10.50	6.70	9.50	7.20	7.60	7.40	7.20	11.0			
12.0				8.20	10.20	9.30	10.00	9.70	6.30	9.00	6.70	7.60	7.00	7.10	12.0			
14.0				5.80	7.70	6.80	8.10	7.40	5.50	7.60	5.90	7.40	6.20	6.30	14.0			
16.0						5.10	6.40	5.70	4.90	5.80	5.30	5.90	5.50	5.60	16.0			
18.0						3.90	5.10	4.40	4.40	4.60	4.80	4.60	4.80	4.70	18.0			
20.0						3.00	4.20	3.50	4.00	3.60	4.00	3.70	3.80	3.70	20.0			
22.0						2.30	3.40	2.80	3.50	2.90	3.30	3.00	3.10	3.00	22.0			
24.0								2.20	3.00	2.30	2.70	2.40	2.50	2.40	24.0			
26.0								1.70	2.50	1.80	2.20	1.90	2.00	1.90	26.0			
28.0								1.30	2.10	1.40	1.80	1.50	1.60	1.50	28.0			
30.0								0.95	1.80	1.00	1.40	1.10	1.20	1.10	30.0			
32.0										0.75	1.10	0.85	0.95	0.85	32.0			
34.0										0.55	0.90	0.55	0.70	0.60	34.0			
36.0													0.50		36.0			
38.0															38.0			
1	0	50	0	100	0	100	0	100	0	100	50	100	84	100	1			
2	0	0	16	0	33	33	66	68	100	83	100	95	100	100	2			
3	0	0	16	0	33	33	66	68	100	83	100	95	100	100	3			
4	0	0	16	0	33	33	66	68	100	83	100	95	100	100	4			
MODE	1,2	1	2	1	2	1	2	1	2	1	2	1	2	1,2	MODE			
[DEG]				0~83.5								18~83.5		4~83.5		25~83.5		[DEG]
	※13/10	7	5	7	5	5	4	4	4	4	4	4	4	4				
	重荷重装置	35t																

MB		7.2m	360°	JPN

Boom Length (m)	10.3	14.1	14.1	17.8	17.8	25.4	25.4	33.6	33.6	37.3	37.3	40.0	40.0	41.2	m							
1.8	※55.40	35.00	20.30	35.00	20.30	20.30	16.80								1.8							
2.1	※52.50	35.00	20.30	35.00	20.30	20.30	16.80								2.1							
2.5	49.00	35.00	20.30	35.00	20.30	20.30	16.80	14.00	12.00						2.5							
3.0	45.30	35.00	20.30	35.00	20.30	20.30	16.80	14.00	12.00	11.00	10.00				3.0							
3.5	42.00	35.00	20.30	35.00	20.30	20.30	16.80	14.00	12.00	11.00	10.00	7.60	7.60	7.20	3.5							
4.0	39.20	35.00	20.30	34.50	20.30	20.30	16.80	14.00	12.00	11.00	10.00	7.60	7.60	7.20	4.0							
4.5	36.60	34.70	20.30	32.50	20.30	20.30	16.80	14.00	12.00	11.00	10.00	7.60	7.60	7.20	4.5							
5.0	33.50	32.60	20.30	30.70	20.30	20.30	16.80	14.00	11.40	11.00	10.00	7.60	7.60	7.20	5.0							
5.5	30.70	30.40	20.30	29.00	20.30	20.30	16.80	14.00	10.80	11.00	10.00	7.60	7.60	7.20	5.5							
6.0	27.70	27.50	20.30	27.20	20.30	19.90	16.60	14.00	10.30	11.00	10.00	7.60	7.60	7.20	6.0							
6.5	25.20	24.90	20.30	24.70	20.30	19.00	15.80	14.00	9.80	11.00	10.00	7.60	7.60	7.20	6.5							
7.0	23.10	22.80	20.30	22.60	20.30	18.20	15.00	13.80	9.40	11.00	9.80	7.60	7.60	7.20	7.0							
8.0		18.20	19.90	17.80	20.30	16.80	13.70	12.90	8.60	11.00	9.00	7.60	7.60	7.20	8.0							
9.0		14.00	15.60	13.80	16.20	15.00	12.50	12.00	7.90	10.80	8.30	7.60	7.60	7.20	9.0							
10.0		11.20	12.60	10.90	13.20	12.20	11.50	11.20	7.30	10.10	7.70	7.60	7.60	7.20	10.0							
11.0		9.20	10.50	8.90	11.00	10.10	10.70	10.50	6.70	9.50	7.20	7.60	7.40	7.20	11.0							
12.0				7.30	9.30	8.50	9.80	9.10	6.30	9.00	6.70	7.60	7.00	7.10	12.0							
14.0				5.10	7.00	6.10	7.40	6.70	5.50	6.90	5.90	7.00	6.20	6.30	14.0							
16.0						4.60	5.80	5.10	4.90	5.30	5.30	5.40	5.50	5.40	16.0							
18.0						3.50	4.60	4.00	4.40	4.10	4.50	4.20	4.30	4.20	18.0							
20.0						2.60	3.80	3.10	3.90	3.20	3.60	3.30	3.40	3.30	20.0							
22.0						2.00	3.10	2.40	3.20	2.60	2.90	2.60	2.70	2.70	22.0							
24.0								1.90	2.70	2.00	2.40	2.10	2.20	2.10	24.0							
26.0								1.40	2.20	1.50	1.90	1.60	1.70	1.60	26.0							
28.0								1.00	1.90	1.10	1.50	1.20	1.30	1.20	28.0							
30.0								0.75	1.50	0.85	1.20	0.90	1.00	0.95	30.0							
32.0										0.55	0.95	0.60	0.75	0.65	32.0							
34.0											0.70		0.50		34.0							
36.0															36.0							
38.0															38.0							
1	0	50	0	100	0	100	0	100	0	100	50	100	84	100	1							
2	0	0	16	0	33	33	66	68	100	83	100	95	100	100	2							
3	0	0	16	0	33	33	66	68	100	83	100	95	100	100	3							
4	0	0	16	0	33	33	66	68	100	83	100	95	100	100	4							
MODE	1,2	1	2	1	2	1	2	1	2	1	2	1	2	1,2	MODE							
[DEG]				0~83.5								12~83.5		0~83.5		27~83.5		18~83.5		33~83.5		[DEG]
	※13/10	7	5	7	5	5	4	4	4	4	4	4	4	4								
	重荷重装置	35t																				









# GR-600N (TADANO)



Crane Type	m	10.3	10.3	10.3	10.3	33.6	33.6	33.6	33.6	33.6	33.6	33.6	33.6	37.3	37.3	37.3	37.3	37.3	37.3	37.3	37.3	m	
Crane Type	°	5	25	45	60	5	25	45	60	5	25	45	60	5	25	45	60	5	25	45	60	°	
Tower Crane	2.0																						2.0
	3.0	3.20																					3.0
	3.5	3.20																					3.5
	4.0	3.20																					4.0
	4.5	3.20																					4.5
	5.0	3.20																					5.0
	5.5	3.20																					5.5
	6.0	3.20					3.20				3.00												6.0
	6.5	3.20					3.20				3.00				3.00				2.90				6.5
	7.0	3.20					3.20				3.00				3.00				2.90				7.0
	8.0	3.05	2.35				3.20				3.00				3.00				2.90				8.0
	9.0	2.75	2.20				3.20				3.00				3.00				2.90				9.0
	10.0	2.55	2.05				3.20				3.00				3.00				2.90				10.0
	11.0	2.35	1.90				3.20				3.00				3.00				2.90				11.0
	12.0	2.15	1.80	1.55			3.20	2.20			3.00	2.20			3.00	2.25			2.90	2.20			12.0
	13.0	2.00	1.70	1.50	0.90		3.10	2.15			3.00	2.15			3.00	2.15			2.90	2.15			13.0
	14.0	1.85	1.65	1.45	0.90	2.95	2.10				2.95	2.10			3.00	2.10			2.90	2.10			14.0
	16.0	1.65	1.50	1.35	0.85	2.70	1.95	1.50			2.70	1.95	1.50		2.80	2.00	1.50		2.80	2.00	1.50		16.0
	18.0	1.50	1.40	1.30		2.55	1.85	1.40	0.85		2.50	1.85	1.40	0.85	2.60	1.90	1.45	0.85	2.60	1.90	1.45	0.85	18.0
	20.0	1.35	1.30			2.35	1.75	1.35	0.85		2.35	1.75	1.35	0.85	2.40	1.80	1.35	0.85	2.40	1.80	1.35	0.85	20.0
	22.0					2.20	1.65	1.25	0.80		2.20	1.65	1.25	0.80	2.30	1.70	1.30	0.80	2.25	1.70	1.30	0.80	22.0
	24.0					2.10	1.60	1.20	0.80		1.95	1.60	1.20	0.80	2.15	1.65	1.20	0.80	2.10	1.65	1.20	0.80	24.0
26.0					1.95	1.50	1.15	0.80		1.70	1.50	1.15	0.80	2.00	1.55	1.15	0.80	1.90	1.55	1.15	0.80	26.0	
28.0					1.80	1.45	1.10	0.80		1.50	1.45	1.10	0.80	1.60	1.50	1.10	0.75	1.70	1.50	1.10	0.75	28.0	
30.0					1.25	1.35	1.05			1.35	1.35	1.05		1.20	1.40	1.05	0.75	1.50	1.40	1.05	0.75	30.0	
32.0					0.90	1.20	1.00			1.20	1.20	1.00		0.90	1.20	1.00		1.15	1.30	1.00		32.0	
34.0					0.60	0.85	0.95			1.05	1.05	0.95		0.60	0.90	1.00		0.90	1.10	1.00		34.0	
36.0						0.55				0.90	0.95				0.60	0.70		0.65	0.85	0.95		36.0	
38.0										0.70	0.85							0.40	0.60	0.65		38.0	
40.0										0.50	0.60											40.0	
42.0																						42.0	
Crawler Crane	1	0	0	0	0	100	100	100	100	0	0	0	0	100	100	100	100	50	50	50	50	1	
	2	0	0	0	0	68	68	68	68	100	100	100	100	83	83	83	83	100	100	100	100	2	
	3	0	0	0	0	68	68	68	68	100	100	100	100	83	83	83	83	100	100	100	100	3	
	4	0	0	0	0	68	68	68	68	100	100	100	100	83	83	83	83	100	100	100	100	4	
MODE		1,2				1				2				1				2				MODE	
[DEG]	[DEG]	23~83.5	35~83.5	54~83.5	67~83.5	45~83.5	46~83.5	53~83.5	64~83.5	32~83.5	38~83.5	53~83.5	65~83.5	50~83.5	52~83.5	54~83.5	64~83.5	43~83.5	49~83.5	51~83.5	64~83.5	[DEG]	

Crane Type	m	40.0	40.0	40.0	40.0	40.0	40.0	40.0	40.0	41.2	41.2	41.2	41.2										m
Crane Type	°	5	25	45	60	5	25	45	60	5	25	45	60										°
Tower Crane	2.0																						2.0
	3.0																						3.0
	3.5																						3.5
	4.0																						4.0
	4.5																						4.5
	5.0																						5.0
	5.5																						5.5
	6.0																						6.0
	6.5																						6.5
	7.0	3.00					2.80				2.50												7.0
	8.0	3.00					2.80				2.50												8.0
	9.0	3.00					2.80				2.50												9.0
	10.0	3.00					2.80				2.50												10.0
	11.0	3.00					2.80				2.50												11.0
	12.0	3.00					2.80				2.50												12.0
	13.0	3.00	2.15				2.80	2.15			2.50	2.15											13.0
	14.0	3.00	2.10				2.80	2.10			2.50	2.10											14.0
	16.0	2.85	2.00				2.80	2.00			2.50	2.00											16.0
	18.0	2.65	1.90	1.45	0.85		2.65	1.90	1.45	0.85	2.50	1.90	1.45	0.85									18.0
	20.0	2.45	1.80	1.40	0.85	2.45	1.80	1.40	0.85		2.50	1.80	1.40	0.85									20.0
	22.0	2.30	1.75	1.30	0.80	2.30	1.75	1.30	0.80		2.35	1.75	1.30	0.80									22.0
	24.0	2.20	1.65	1.25	0.80	2.20	1.65	1.25	0.80		2.20	1.65	1.25	0.80									24.0
26.0	2.00	1.60	1.20	0.80	2.00	1.60	1.20	0.75		2.00	1.60	1.20	0.75									26.0	
28.0	1.60	1.50	1.10	0.75	1.65	1.50	1.10	0.75		1.60	1.55	1.15	0.75									28.0	
30.0	1.20	1.45	1.05	0.75	1.30	1.45	1.05	0.75		1.20	1.45	1.10	0.75									30.0	
32.0	0.90	1.20	1.05		0.95	1.25	1.05			0.90	1.20	1.05	0.75									32.0	
34.0	0.60	0.90	1.00		0.70	0.95	1.00			0.60	0.90	1.00										34.0	
36.0		0.60	0.75		0.45	0.70	0.80				0.60	0.75										36.0	
38.0			0.45			0.40	0.55					0.45										38.0	
40.0																						40.0	
42.0																						42.0	
Truck/Trailer Crane	1	100	100	100	100	84	84	84	84	100	100	100	100									1	
	2	95	95	95	95	100	100	100	100	100	100	100	100									2	
	3	95	95	95	95	100	100	100	100	100	100	100	100									3	
	4	95	95	95	95	100	100	100	100	100	100	100	100									4	
MODE		1				2				1,2													MODE
[DEG]	[DEG]	53~83.5	55~83.5	54~83.5	67~83.5	50~83.5	52~83.5	55~83.5	67~83.5	54~83.5	56~83.5	56~83.5	65~83.5									[DEG]	